



Level Measurement Solutions
for over *3* Decades

LEVEL SWITCHES FOR GRANULES, SOLIDS AND BULK MATERIALS TILT SWITCH BMT-550



Tilt switch is an electronic device specially developed for sensing the level of an approaching stockpile on stacker-reclaimers or material in hopper / silo and to provide an output signal which can be used to initiate control action. It is used for measuring level of solids & granules.

OPERATING PRINCIPLE

The Tilt switch comprises of two parts : Tilt Probe & Monitoring Unit. The Tilt probe is of tubular structure & is hanged by means of a chain link arrangement. When tilt probe gets tilted by material, the output relay gets actuated. The sensor probe unit has Omni-directional sensing pattern and hence on whichever side it tilts, it provides an output signal. It has built-in adjustable ON & OFF delays to take care of nuisance tripping due to wind flow or momentary jerks at the start and stop of the machine.



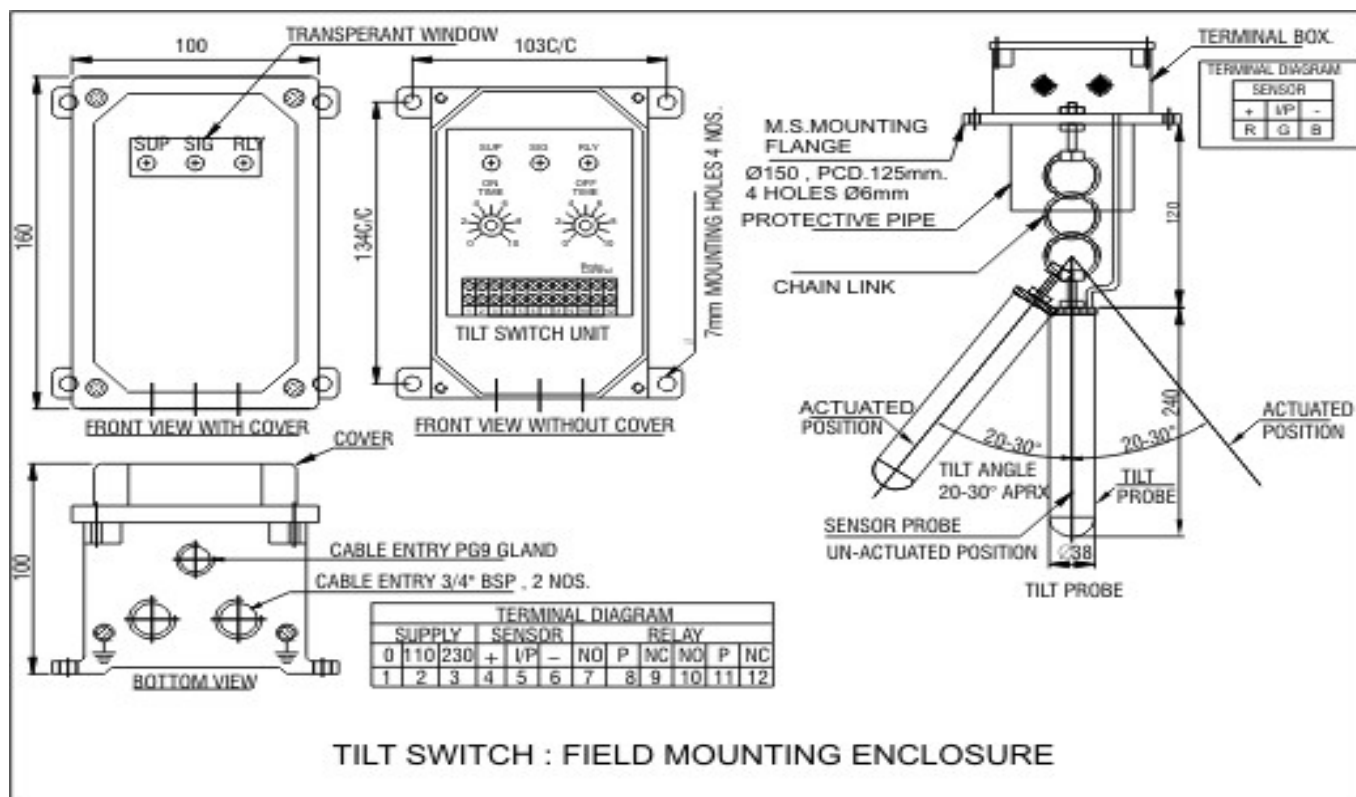
CONTROL UNIT

TILT PROBE

FEATURES:

- Rugged, heavy duty, abrasion resistant design of tilt probe
- Solid state control unit
- LED indication of switch operation
- Adjustable ON & OFF delay to prevent nuisance tripping
- Omni-directional sensor probe.
- The switch operates when tilts to any direction
- Less maintenance
- Mercury-free Sensor
- Special models for use in hazardous area applications
- Models with light weight probe for materials having low bulk density
- Special models with extra length rope with protective pipe
- Special models with fail safe design
- Special models with tilt probes designed for hot area application





SPECIFICATION :

Tilt Probe:

Enclosure for Tilt probe Tilt Angle
Cable
Max operating temp

Mounting

Consist of Tilt Probe and Control Unit:

38 mm diameter x 250 mm long,
SS probe tube with MS counterweight
Totally enclosed, IP 67
20- 30 degrees approx from vertical
3 core, PVC, 2 Meters
Standard probe : 60 °C
Special probes for working upto 120 °C
Flanged with and IP 65 terminal box for termination of sensor cable

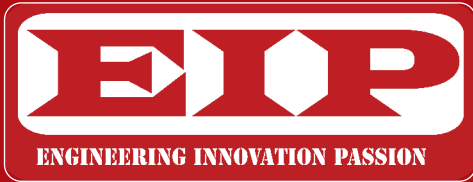
Control Unit:

Supply voltage 110 / 240 V AC, 50 Hz / 24 V DC (Select model)
OFF Delay 1 to 10 Seconds (Continuously Adjustable).
ON Delay 1 to 10 Seconds (Continuously Adjustable).
Output contacts 2 NO + 2 NC relay contact.
Contact rating 5 Amp. Resistive at 240 V AC. 50 Hz
Enclosure for Control circuit Cast Al, IP 65 / DIN Rail / Corrosion resistant
DMC / Flameproof (Select model)
Paint Light Grey 631 as per IS 5.
Cable entryt 3 Nos. (2 Nos: 3/4 th inch, 1 No: PG 9 for sensor)(For flameproof models 3/4 inch)
Operating temp Up to 60 °C

APPLICATION:

- Stockpile level detection
- High and Low level sensing in hopper
- Plugged chute detection
- Material flow detection
- To detect high level of large, heavy materials in bins, tanks and silos.
- Material presence control on a conveyor belt
- High level indicator switch in a crusher box





About EIP

EIP was established about three decades ago, since then the company has been able to build its reputation in the field of Design / Manufacture Supply of accurate reliable POINT LEVEL AND INVENTORY CONTROL SYSTEMS which have proven to be in satisfactory operation under harsh environmental conditions. Apart from India EIP products have also been proven in other countries.

EIP aims to provide not only stable operating system but also to re-engineer equipments and systems as per the needs of the customers. This has been possible due to our wide experience in this field backed by constant technological development and absorption of new technologies developed world-wide.

EIP's strong endeavor to provide the best solution to its customers has gone a long way in introducing the most advanced level measurement technology from time to time.

Recent value addition to the Solutions provided by EIP is the Non Contact Ultrasonic Flow Meter which solves the problem of accurate flow measurement without any invasion into the pipeline, and the Solid Flow Detector which determines any choking or jamming of the pipelines in which ash or any other Solid material is flowing.

EIP has also diversified its portfolio to provide Zero leakage Non Corrosive Heavy Duty Knife Gate Valves, Butterfly Valves and Water Control Gate.

EIP ENVIRO LEVEL CONTROLS PVT. LTD.

B-45, SECTOR-8, NOIDA-201301, (INDIA)

Tel. No. : 91-120-2421831, 2421832 & 4243333

Fax No.: 91-120-2421833

Email: rgoyal@eipenviroindia.com, rajat@eipenviroindia.com

Website : www.eipenviroindia.com

