

HeightMap

Mapping Editor

Plane Polygon

Selection Tools

Calculate Plane Calculate

Delete Plane Delete

Delete Polygon Delete

Mapping Editor Tools

Complete Selection Apply

Set new Height 0.00 Apply

Calculate Volume

Density 1.0

Plane Points 8 Polygons Points 28 Calculate

Selection Delete Clear Peaks

Total Mass 287 ton

Volume 287 m³

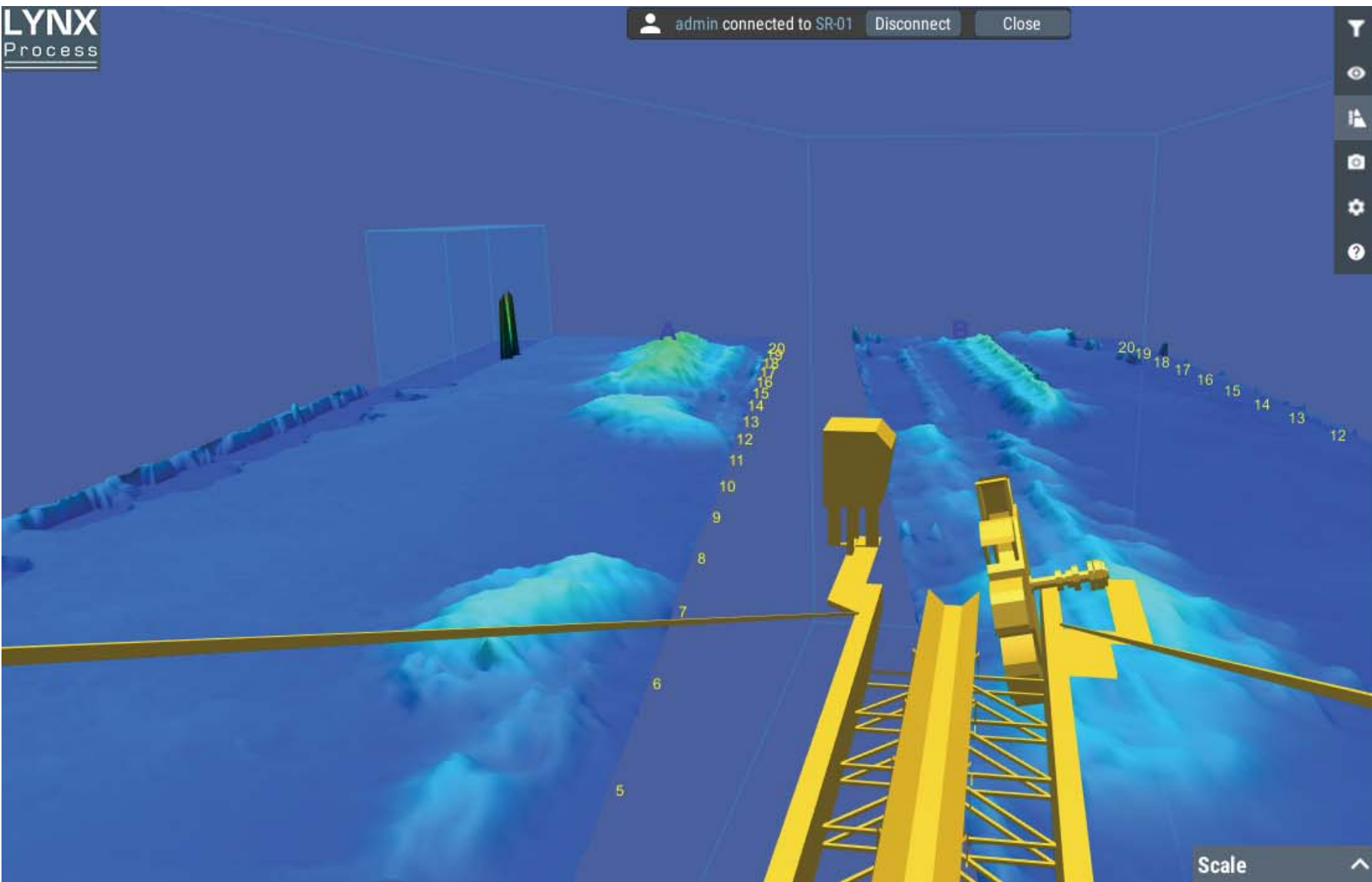
Stack Length 10.5 m

Stack Angle 38.3 °

Stack Max Height 3.4 m

Stack Mean Height 2.8 m





HeightMap

Mapping Editor

Plane

Polygon

Selection Tools

Calculate Plane

Calculate

Delete Plane

Delete

Delete Polygon

Delete

Mapping Editor Tools

Complete Selection

Apply

Set new Height

0.00

Apply

Calculate Volume

Density

1.0

Plane Points 8 Polygons Points 28

Calculate

Selection Delete

Clear Peaks

Total Mass

287 ton

Volume

287 m³

Stack Length

10.5 m

Stack Angle

38.3 °

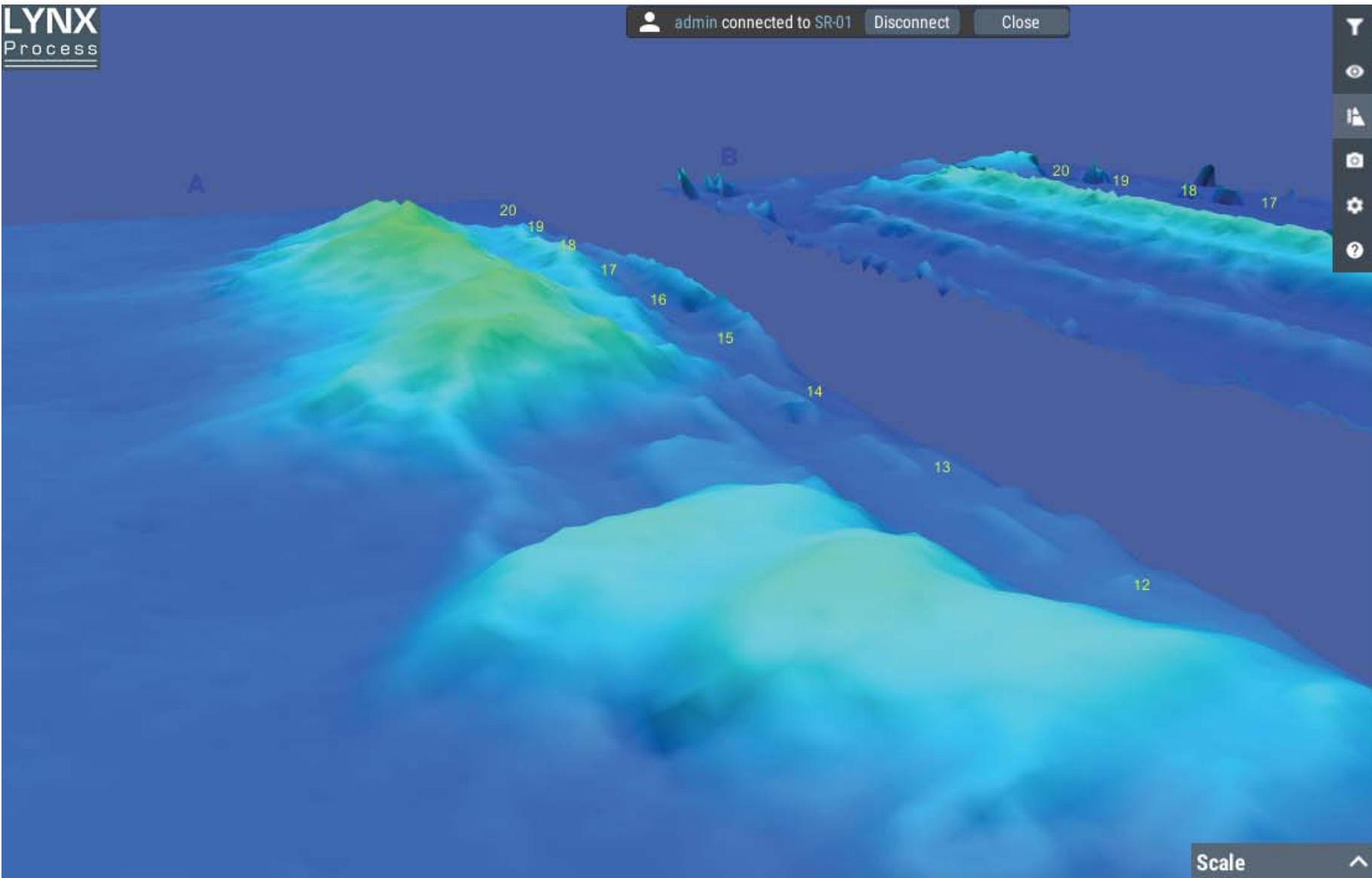
Stack Max Height

3.4 m

Stack Mean Height

2.8 m





HeightMap

Mapping Editor

Plane Polygon

Selection Tools

Calculate Plane Calculate

Delete Plane Delete

Delete Polygon Delete

Mapping Editor Tools

Complete Selection Apply

Set new Height 0.00 Apply

Calculate Volume

Density 1.0

Plane Points 8 Polygons Points 28 Calculate

Selection Delete Clear Peaks

Total Mass	287 ton
Volume	287 m³
Stack Length	10.5 m
Stack Angle	38.3 °
Stack Max Height	3.4 m
Stack Mean Height	2.8 m

20



admin connected to SR-01

Disconnect

Close

12

11

10

9



HeightMap



Mapping Editor



Plane

Polygon



Selection Tools

Calculate Plane

Calculate

Delete Plane

Delete

Delete Polygon

Delete



Mapping Editor Tools

Complete Selection

Apply

Set new Height

0.00

Apply

Calculate Volume

Density

1.0

Plane Points

6

Polygons Points

36

Calculate

Selection Delete

Clear Peaks

Total Mass

1,752 ton

Volume

1,752 m³

Stack Length

17.9 m

Stack Angle

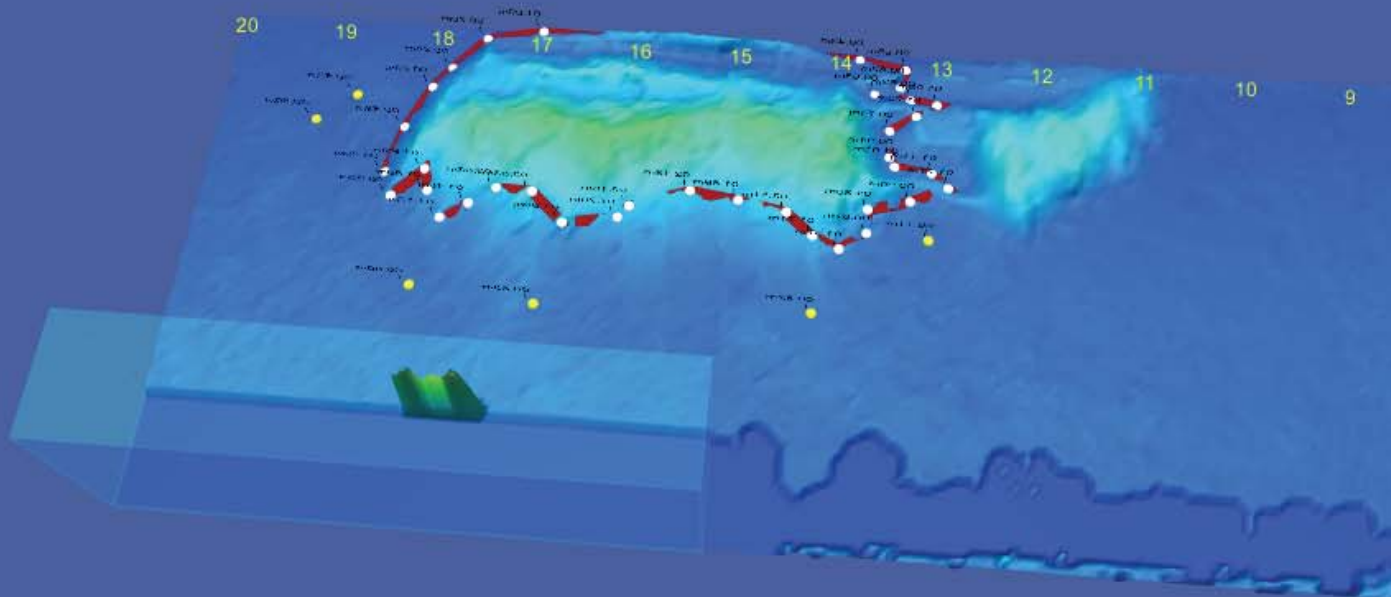
34.1 °

Stack Max Height

5.2 m

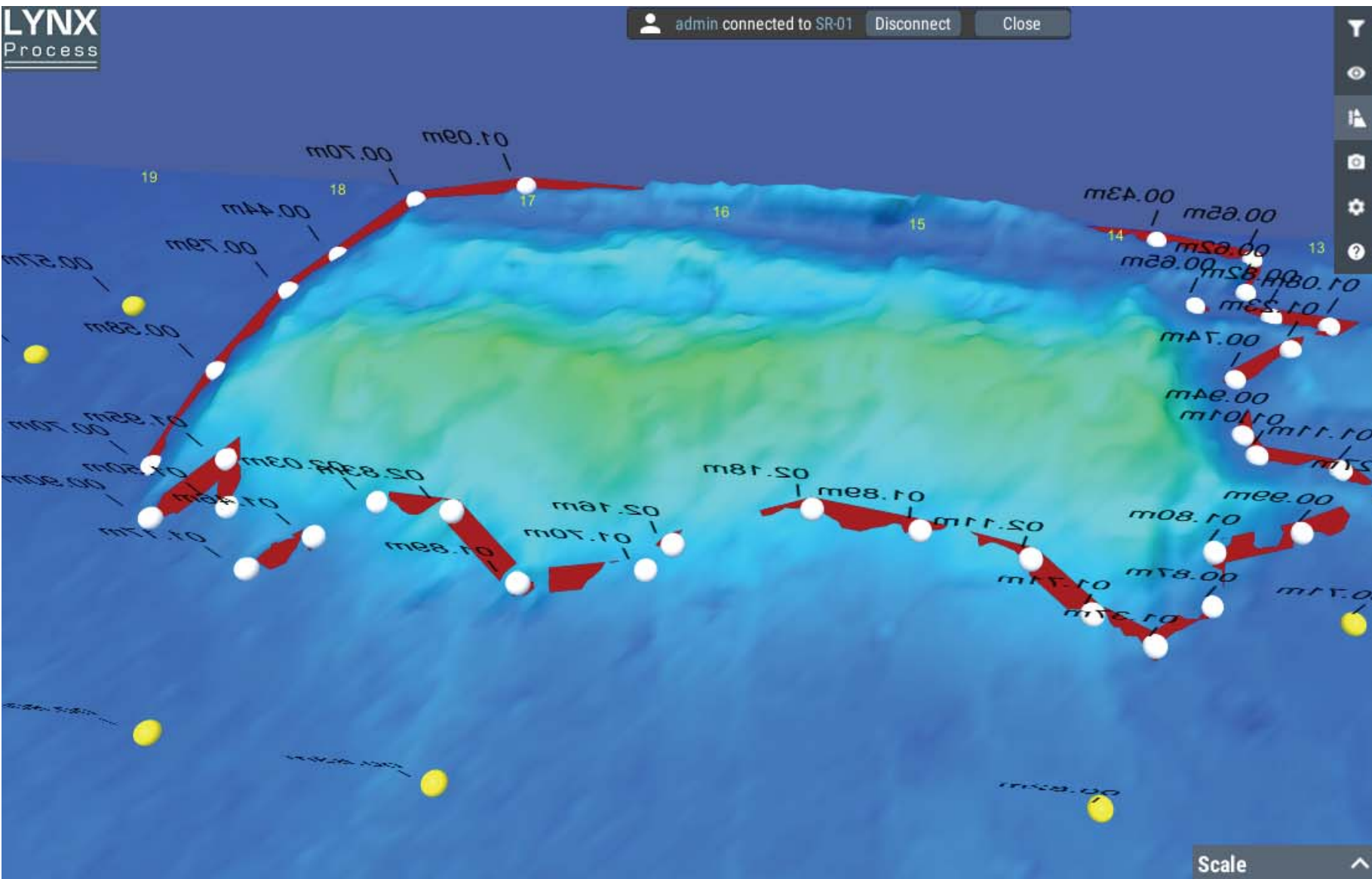
Stack Mean Height

4.3 m



Scale





HeightMap

Mapping Editor

Selection Tools

Calculate Plane

Calculate

Delete Plane

Delete

Delete Polygon

Delete

Mapping Editor Tools

Complete Selection

Apply

Set new Height

0.00

Apply

Calculate Volume

Density

1.0

Plane Points 6 Polygons Points 36

Calculate

Selection Delete

Clear Peaks

Total Mass

1,752 ton

Volume

1,752 m³

Stack Length

17.9 m

Stack Angle

34.1 °

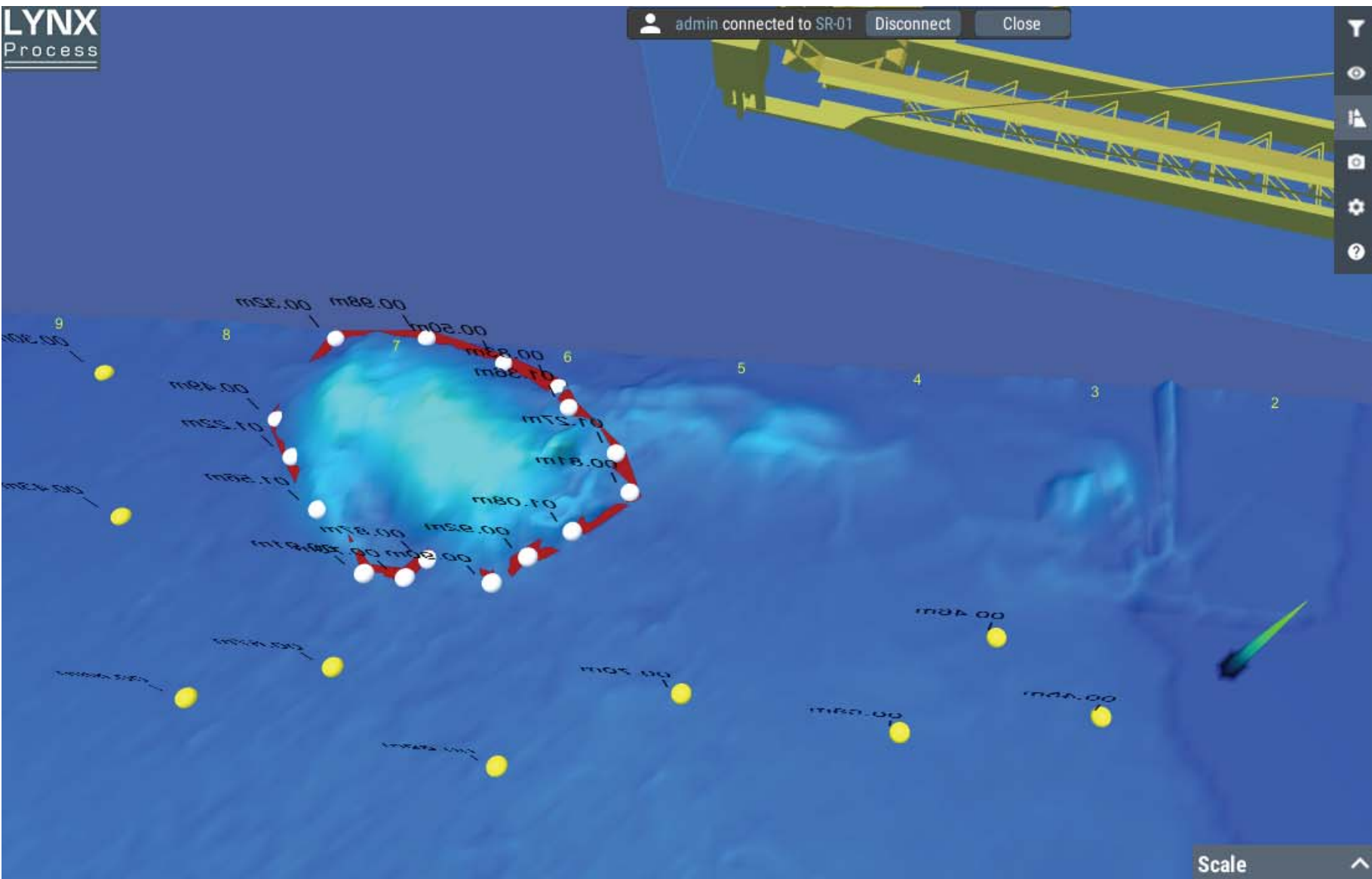
Stack Max Height

5.2 m

Stack Mean Height

4.3 m

admin connected to SR-01 Disconnect Close



HeightMap

Plane
Polygon

Selection Tools

Calculate Plane

Calculate

Delete Plane

Delete

Delete Polygon

Delete

Mapping Editor Tools

Complete Selection

Apply

Set new Height

0.00

Apply

Calculate Volume

Density

1.0

Plane Points 9

Polygons Points 16

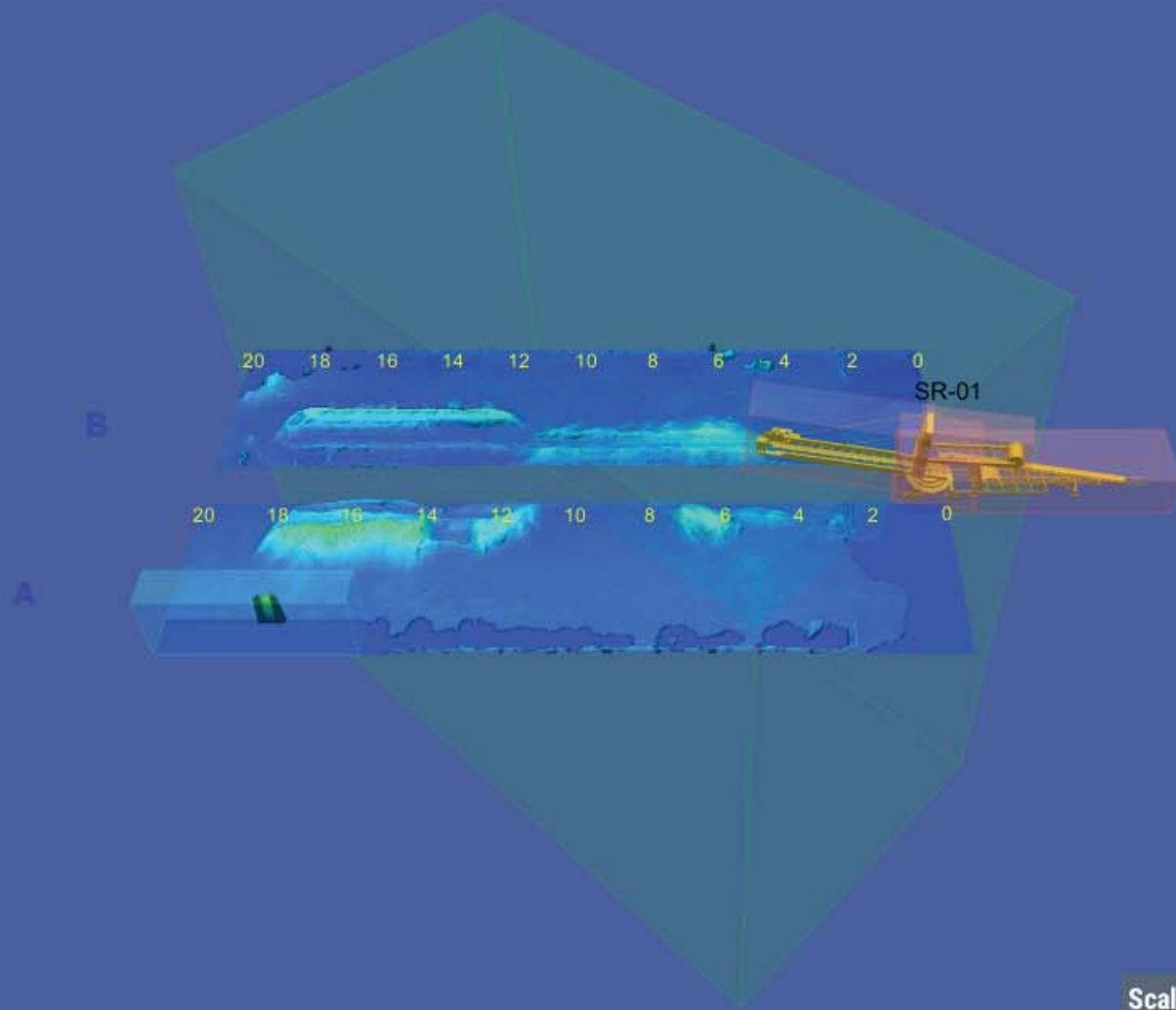
Calculate

Selection Delete

Clear Peaks

Total Mass	407 ton
Volume	407 m³
Stack Length	11.5 m
Stack Angle	31.5 °
Stack Max Height	3.4 m
Stack Mean Height	2.8 m

Scale ^



HeightMap

Mapping Editor



Plane

Polygon



Selection Tools

Calculate Plane

Calculate

Delete Plane

Delete

Delete Polygon

Delete



Mapping Editor Tools

Complete Selection

Apply

Set new Height

0.00

Apply

Calculate Volume

Density

1.0

Plane Points 8

Polygons Points 28

Calculate

Selection Delete

Clear Peaks

Total Mass

287 ton

Volume

287 m³

Stack Length

10.5 m

Stack Angle

38.3 °

Stack Max Height

3.4 m

Stack Mean Height

2.8 m

Scale



